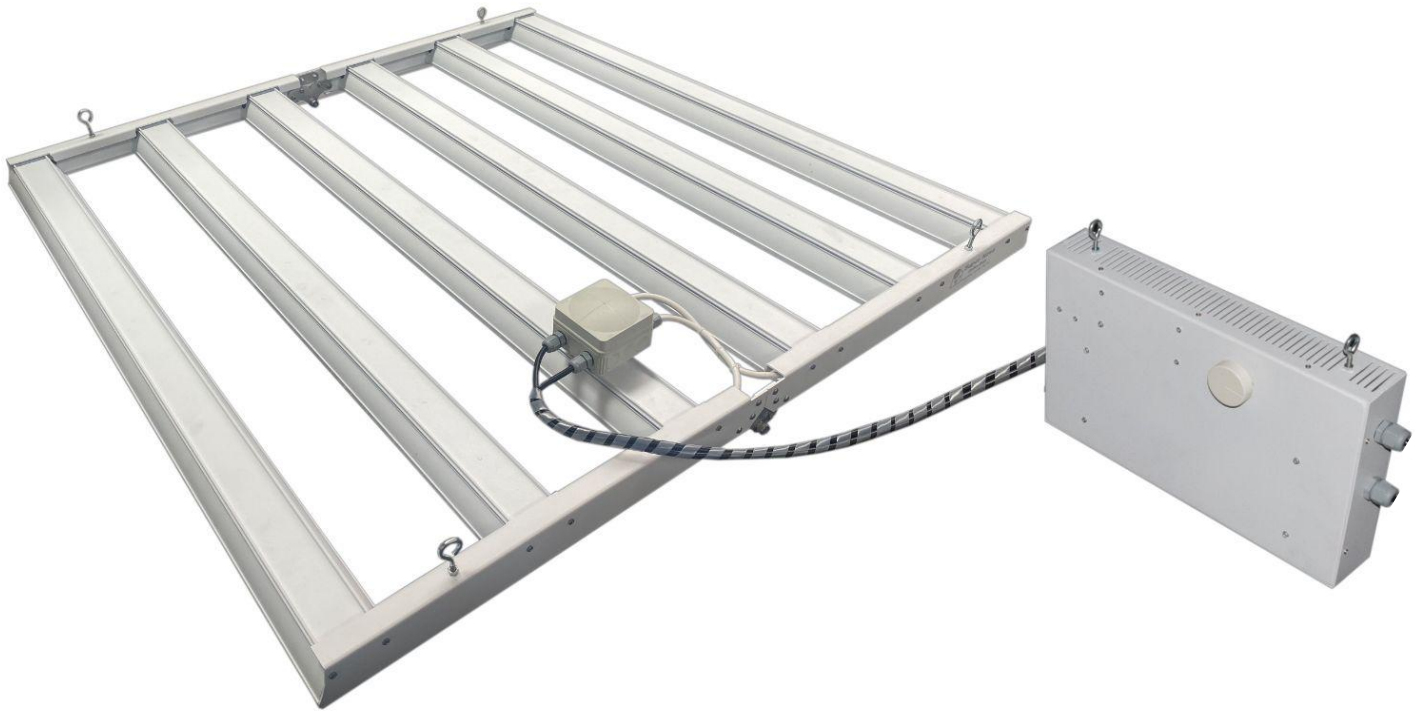
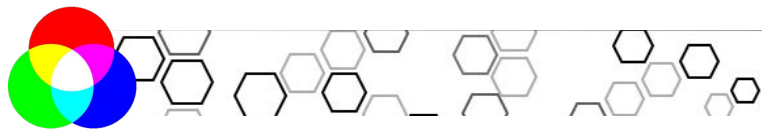


SuperNova

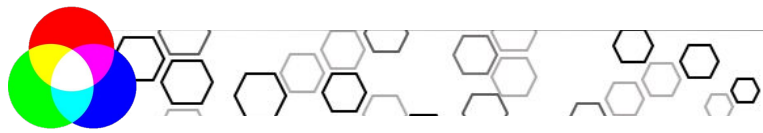




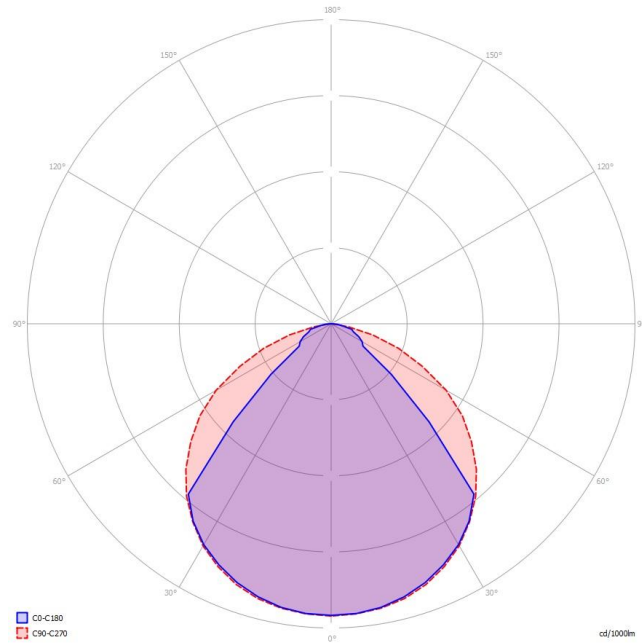
FACT FILE:

<u>General Information</u>	
Body Construction	Extruded Aluminium and SS Hinges
Lens Type	UL V5 Flame proof UV stable Macralon
Recommended Height Installation	Refer to design instructions
Compliance (On PSU)	EN 55015 // EN 6100-3-2 // EN 61347 - 2 - 13 // EN 61547 // EN 62384 // SANS 60598
IP Rating	IP 56. Splash proof for wet environments
Control Type	0 -10V Dimmable and on/off standard. Dali, DMX or KNX on request.
<u>Electrical Information</u>	
Electrical Class	Class 2
Socket Options	IP rated tools free from LED housing to power supply unit
Supply Voltage	90 -305 V AC 50 / 60 Hz
Surge Protection	Between L and N = 6kV Between L and E = 10kV
Power Factor	Better than 0.98
<u>Optical Information</u>	
CRI	4000K Standard. 5000K or 6000K and higher on request.
CCT	Better than 84 as standard. Up to +95 on request.
<u>Performance</u>	
Total Circuit load and Lumens	650W total circuit load with far red activated. (91600 Lumens - 1630 uMol) 600W - White 50W - Far red
<u>Operating Conditions</u>	
Operating Temperature range	From -20°C to +45°C ambient Temperature
Cooling	Passive Convection
Weight	Main body: 8kg Power Supply: 7kg Total Weight: 15kg

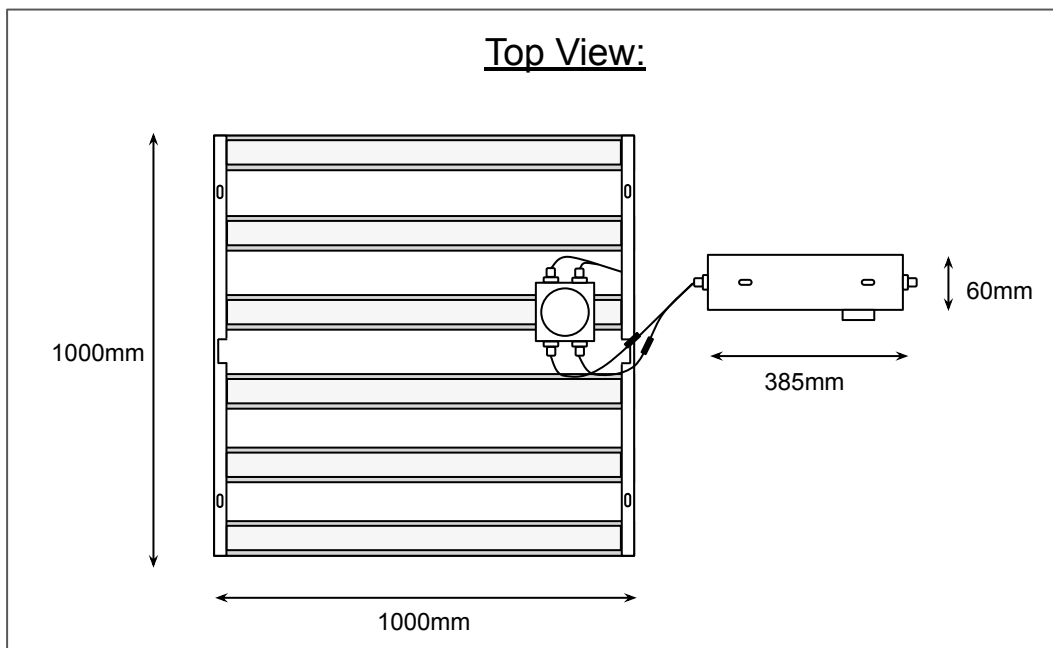
Guarantee/Warranty – 5 years – subject to our terms and conditions



FACT FILE:



Top View:



Side View:

